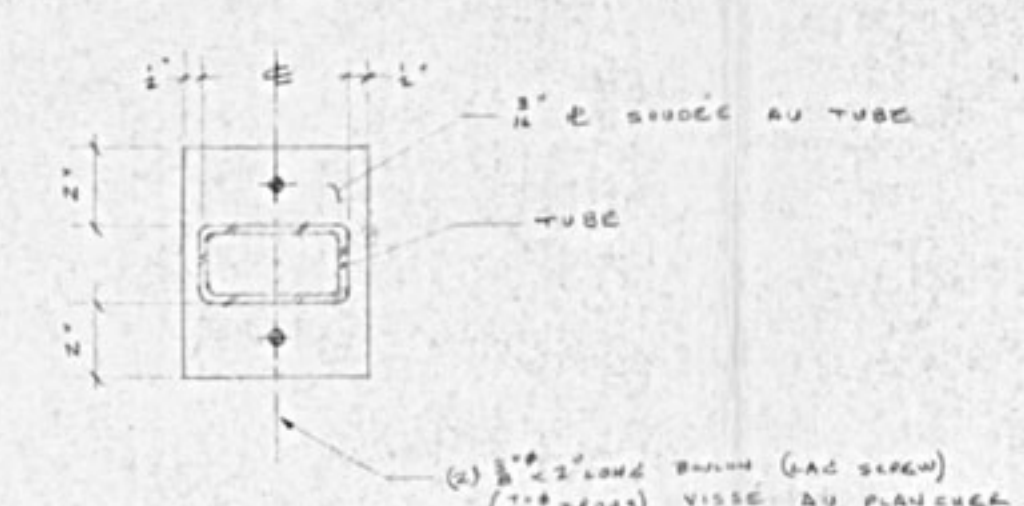
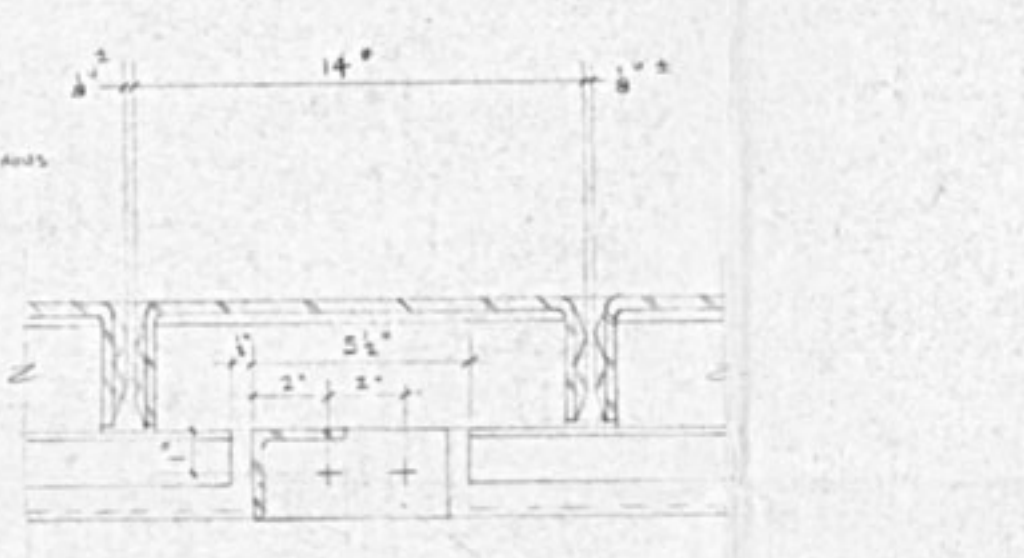


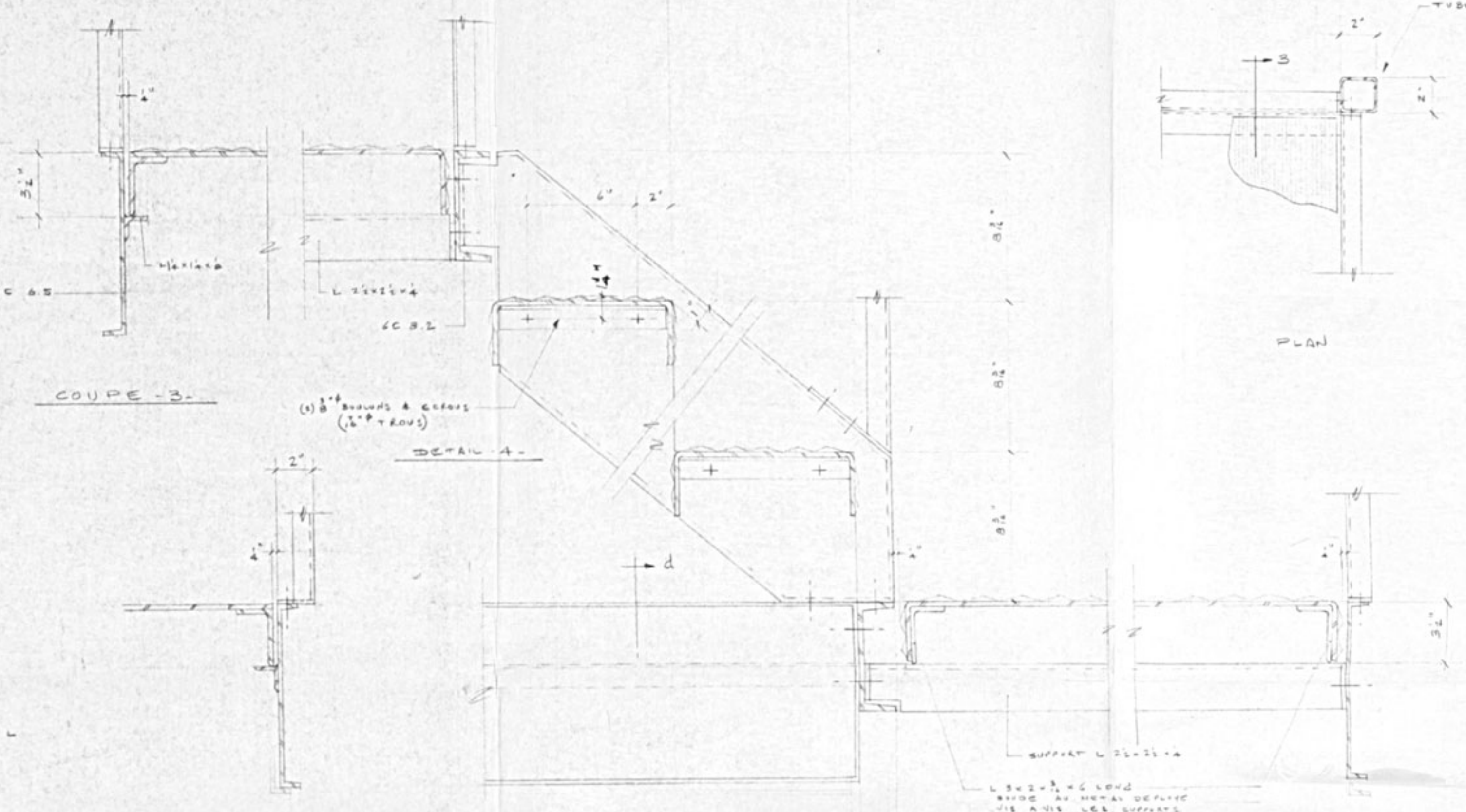
COUPE TYPIQUE DANS LA PASSERELLE



DETAIL TYPIQUE A LA BASE DES TUBES



COUPE a

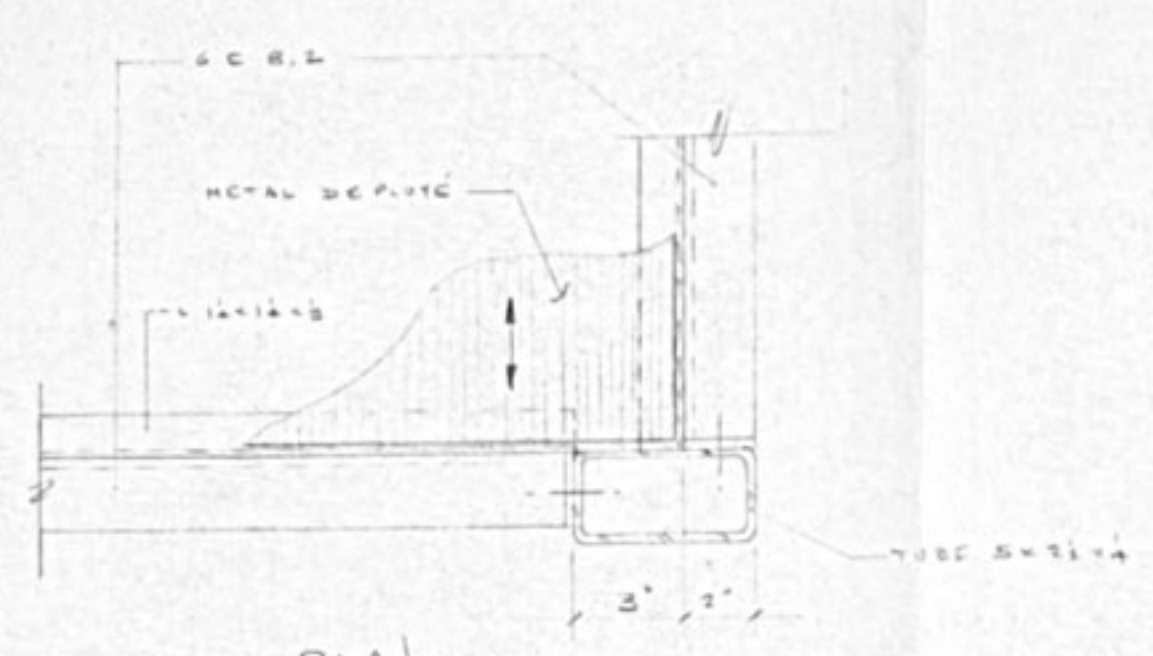


COUPE -3-

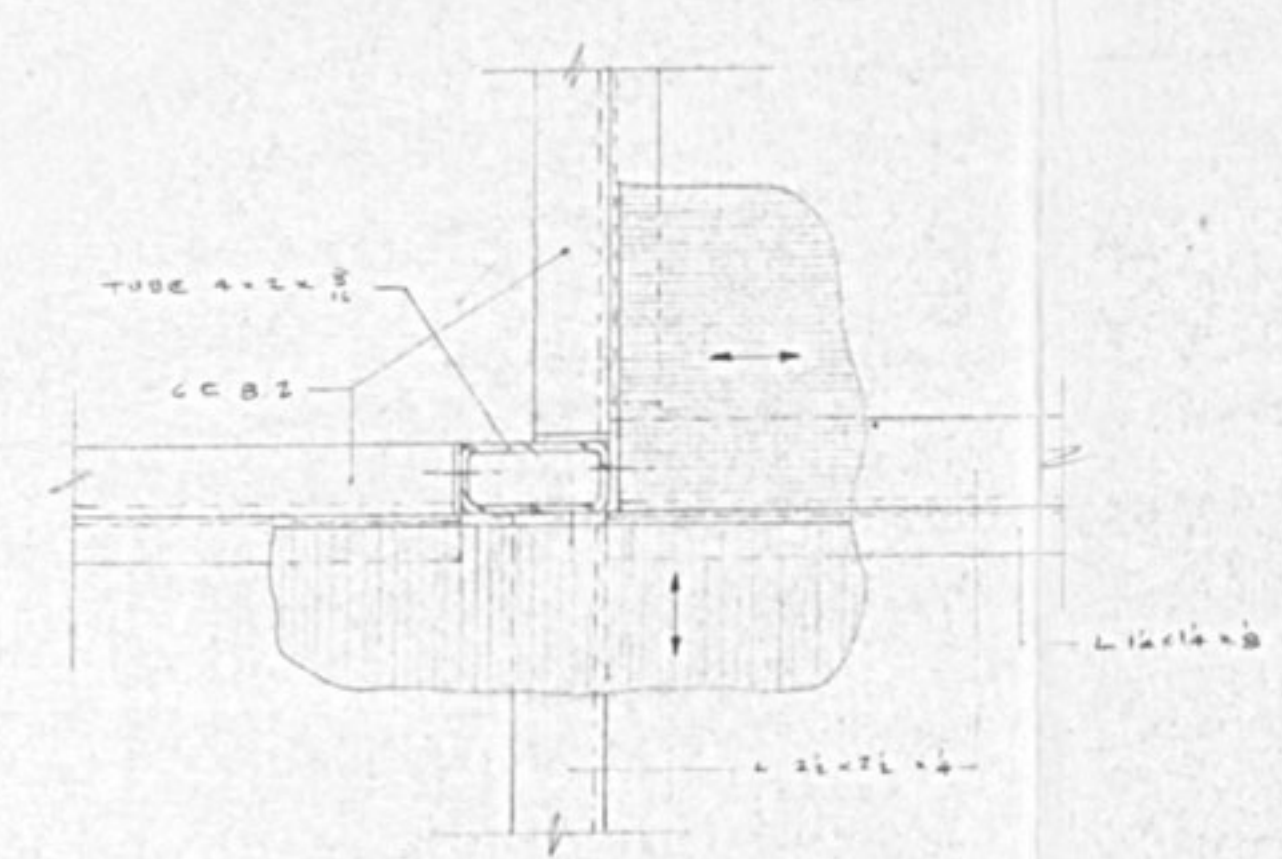
COUPE 'd'

DETAIL -5-

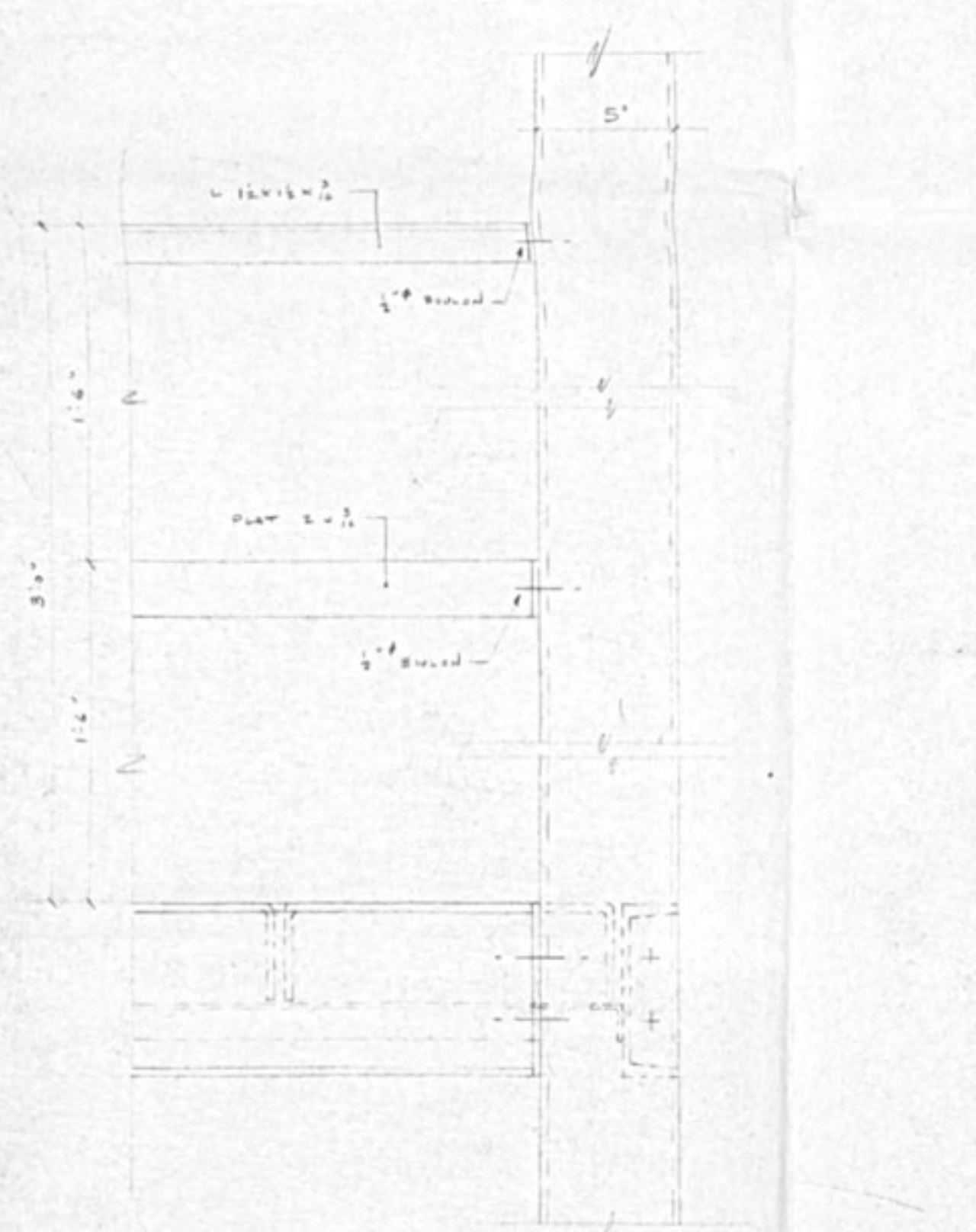
DETAIL -6-



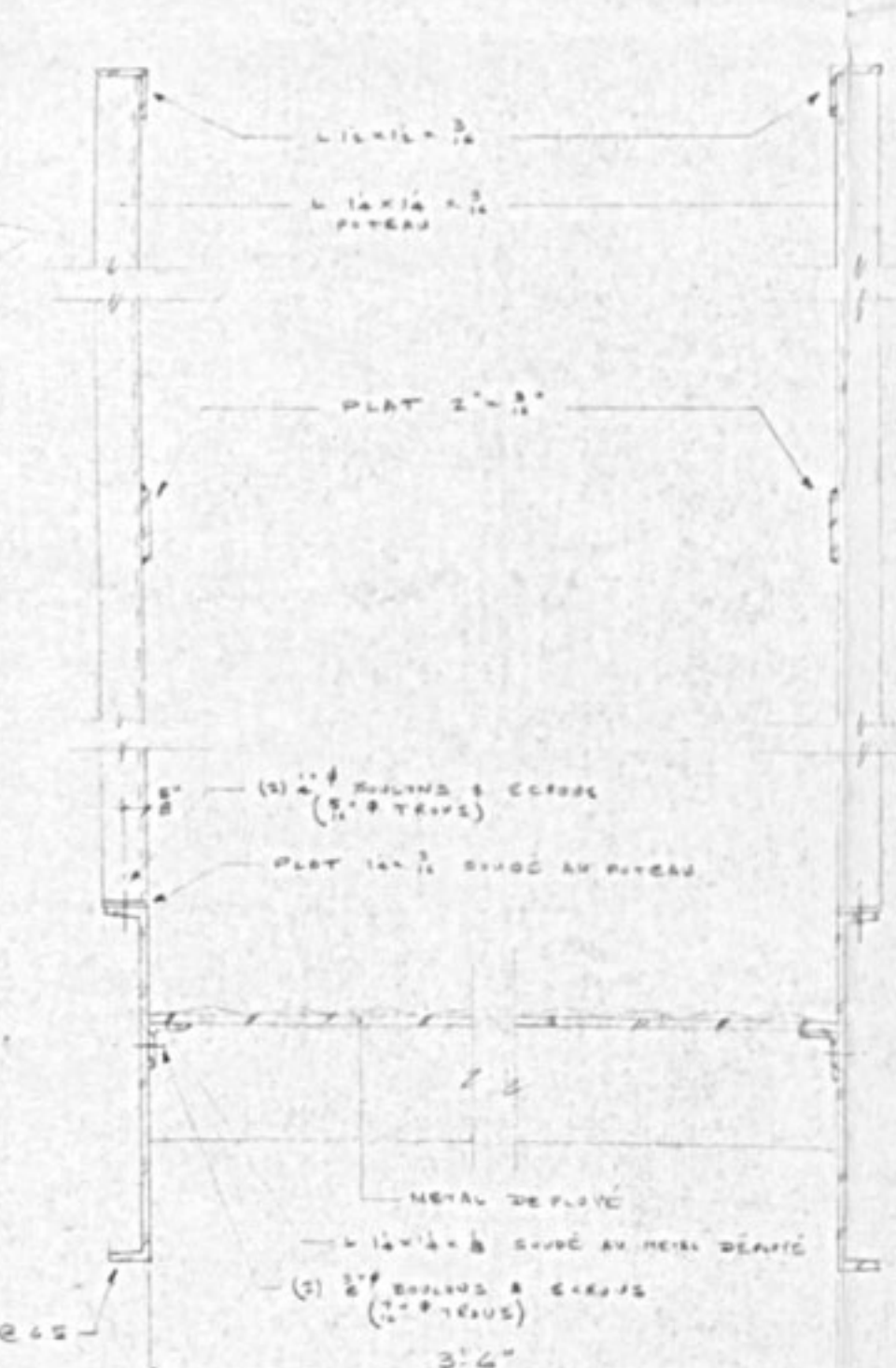
PLAN - DETAIL -1-



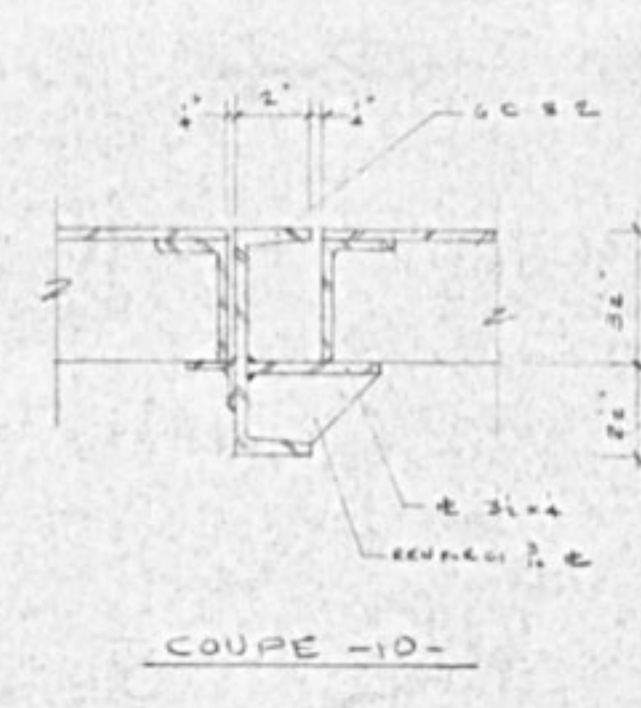
PLAN - DETAIL -2-



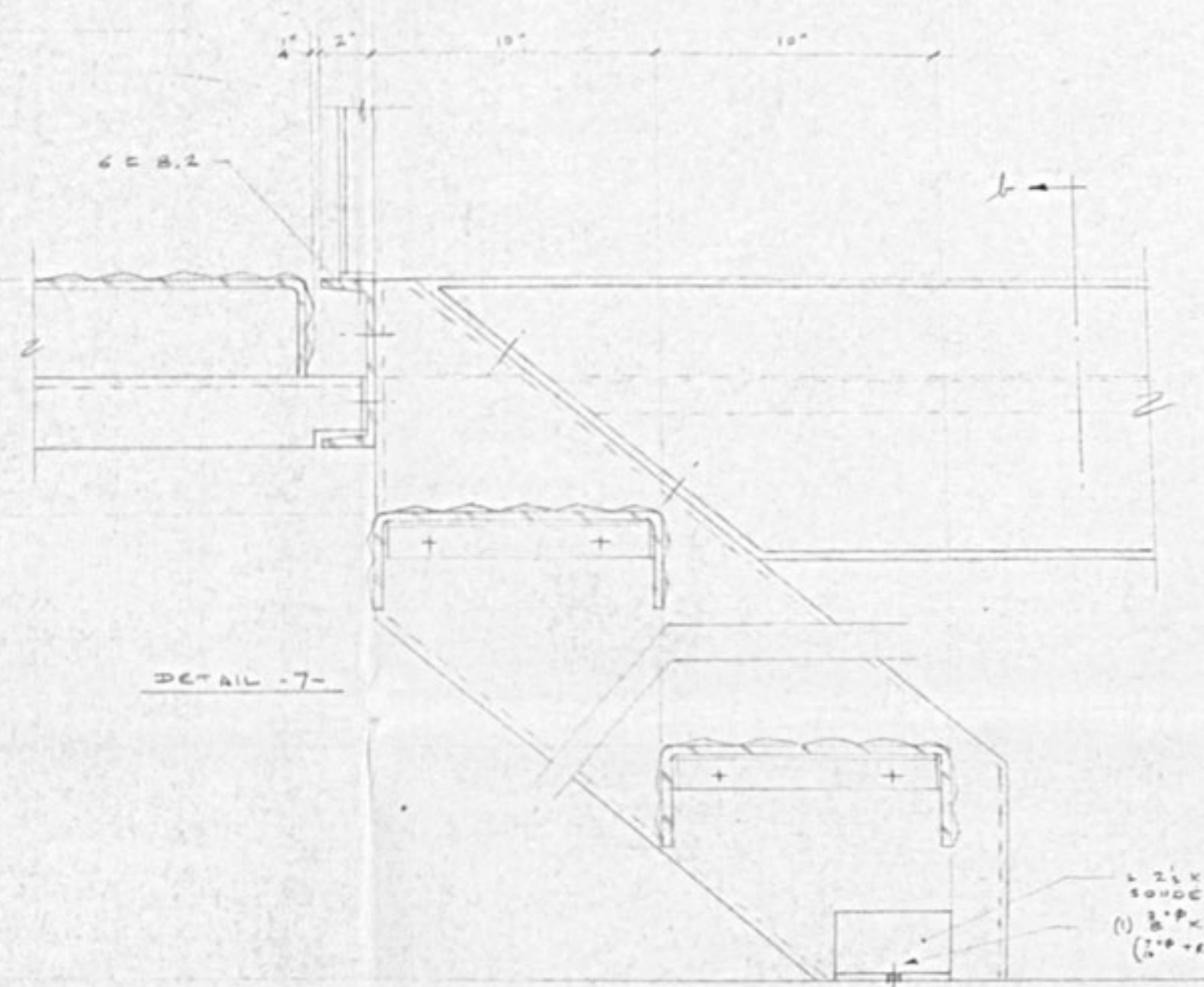
ELEVATION - DETAIL -1-



COUPE TYPIQUE DANS LES ESCALIERS

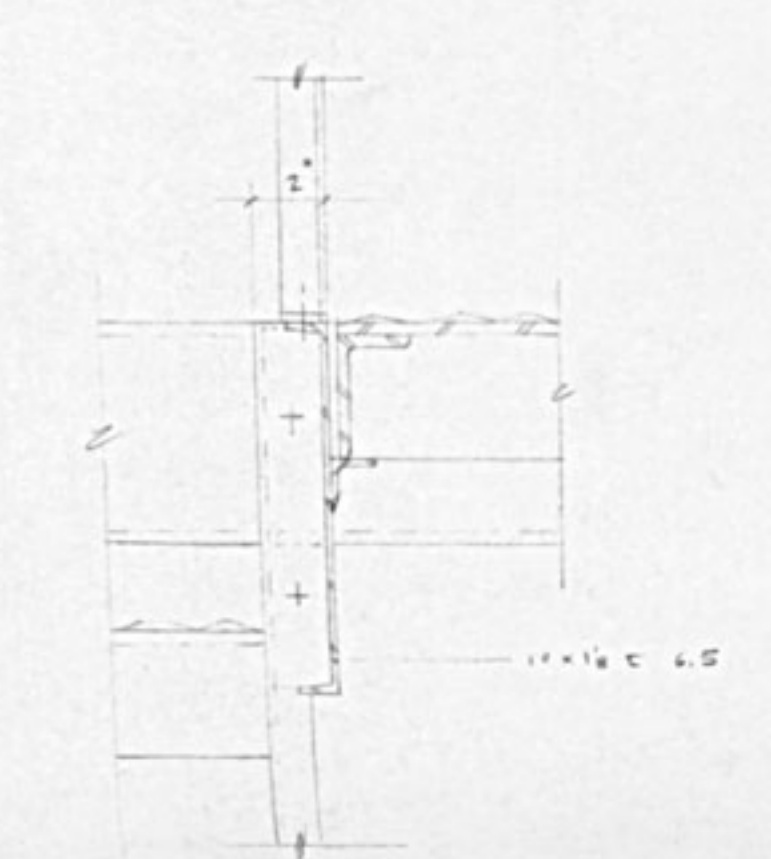


COUPE -10-



DETAIL -7-

DETAIL -8-



COUPE f

COUPE c

DETAIL -9-

NOTES :
 TOUTES LES BILLES DEBOUT 1/2\"/>

LA FONDATION DU THEATRE DU NOUVEAU MONDE	OTTAWA	ECHELLE 3/8\"/>
ARCHITECTE	OTTAWA	DESINE PAR R.G.
ENTR. GEN.		VERIFIE PAR R.G.
POSE PAR D'ARTRES	DETAILS DES ESCALIERS, PASSERELLES & BALUSTRADES EN ACIER	DATE 26 AVRIL 61
N.O. N° 2161	A. FAUSTIN CIE LTEE	REVISION REAL. 5 MAR 61
	500 DAVIDSON MONTREAL	DESSIN NO. 414-251
		FEUILLE N° 3 DE 4
		REV. 1

